



**WE ARE IN THE JOBSITE
PRODUCTIVITY BUSINESS**

CALIFORNIA

SERVICE TOOL



SO MUCH MORE THAN JUST TOOLS

For over 50 years, California Service Tool has served Northern California as the leading tool, safety and equipment distributor for commercial trade contractors. Our comprehensive offering of construction supply products and in-house service capabilities allow our customers to rely on us as a valued resource to help them get the job done.

We strive to consistently deliver unmatched value and exceptional customer service to the MEP contractors and general construction professionals in all of the markets we serve. We utilize our longstanding history and experience to provide value added resources to help overcome all of the challenges this market brings. We've built our company around their ever-changing needs and are dedicated to continually finding ways to drive productivity and profitability for their business.

VALUE ADDED SERVICES:



Tool & Equipment Rental

Utilize the wide selection of specialty tools in our rental fleet to reduce your overhead, mobilize quickly and keep your team working.



Jobsite Services

Our Vendor Managed Inventory (VMI) and Job Startup Rental programs can help reduce your job costs and improve your team's efficiency.



Authorized Repair

If we sell it, we can fix it. We're a Factory Authorized Service Center for the industry's leading tool and equipment manufacturers.



On-Staff Specialists

Our dedicated Products Specialists are here to assist your team with the latest industry codes, standards and requirements.

ROOTED IN NORTHERN CALIFORNIA

As a locally owned family business, we remain focused on the next generation - not the next quarter. The important business decisions we face are made locally by people who live in the communities we serve and who will feel the impacts of those decisions. We will continue to embrace strategies that put our customers and employees first.

CONSUMABLES

Adhesives & Tape
Batteries
Caulks & Sealants
Chemicals
Exothermic Welding
Hoses & Pumps
Locks & Chain
Paint
Pens & Markers
Rags
Tarps
Visqueen

HAND TOOLS

Crimpers
Clasps & Vises
Flashlights
Hammers & Striking
Knives & Blades
Layout Tools
Nippers & Snips
Pliers
Screwdrivers
Sockets & Sets
Strippers
Taps & Dies
Wrenches

POWER TOOLS

Hammer Drills
Impact Drivers & Wrenches
Circular Saws
Band Saws
Reciprocating Saws
Grinders
Rotary Hammers
Lighting
Nibblers & Shears
Utility & Radios

ACCESSORIES

Abrasives
Carbide Bits & Cutters
Diamond Cutting
Drill Bits
Fastening Tips
Hole Saws
Reamers
Saw Blades
Step Bits

SAFETY - PPE

Arc Flash
Confined Space
Ear Protection
Eye Protection
Fire Extinguishers
First Aid
Hand Protection
Hi-Viz Vests & Clothing
Respiratory
Tape & Flagging
Water & Hydration

FALL PROTECTION

Anchor Points
Body Harnesses
Carabiners
Guardrail Systems
Lanyards
Lifeline Systems
Positioning Devices
Rescue Systems
Retractable
Rope Grabs

LASERS, METERS & COMMUNICATION

Line, Dot & Plumb Lasers
Rotary Lasers

Clamp Meters
Digital Multimeters
Electrical Testers
Infrared Cameras
Power Quality
Distance Meters
Two-Way Radios
Radio Accessories

JOBSITE EQUIPMENT

Bending Machines
Compressors
Crimping Tools
Drain Cleaning
Duct Rodders
Fans & Ventilation
Hand Trucks & Jacks
Hoists & Straps
Ladders & Scaffolding
Material Carts & Dollies
Portable Generators
Pulling Machines
Storage Boxes
Temporary Power
Threading Machines
Trash Cans & Tilt Trucks
Truck Boxes & Racks
Vacuums

SPECIFIED PRODUCTS

Bolts, Screws & Washers
Ceiling Wire
Direct Fastening Systems
Firestop Sealants & Devices
Mechanical Anchors
Seismic Supports
Slick Rod Assemblies
Strut, Hardware & Fittings
Threaded Rod



WE PARTNER WITH THE LEADING BRANDS IN THE INDUSTRY:



TOOL & EQUIPMENT RENTAL

CONTROL COSTS & INCREASE PRODUCTIVITY!

CST is a full-service tool rental resource for all commercial trades and facility MRO professionals with hundreds of tools in stock to meet all of your jobsite requirements. You will find a wide selection of specialty tools available for short or long-term rental at highly competitive rates. Cost efficient contractors understand that hidden profits can be found in the methods used to secure equipment. Utilize our large fleet of equipment rental to gain a competitive advantage and drive company profits.



FACTORY AUTHORIZED WARRANTY & REPAIR

WE ARE THE ONLY IN-HOUSE REPAIR SHOP IN THE REGION!

With high labor costs as the driving expense in your company's budget, idle workers on the jobsite can be detrimental to your overall profitability. To minimize downtime, emergency repair services are available to get your crew back up and running. Let us show you how our repair program can save you money and help contribute to your bottom line.



RENTAL CATEGORIES:

- CABLE BENDING EQUIPMENT
- CABLE PULLING EQUIPMENT
- SAFETY EQUIPMENT
- CABLE TERMINATION & CRIMPING

- PIPE THREADING
- MATERIAL HANDLING
- HOLE MAKING



HOW MUCH IS DOWNTIME COSTING YOU?

With high labor being the driving expense for your company's budget, idle workers on the jobsite can be detrimental to your overall profitability. Utilize our in-house repair services to keep your crews working.



INCREASE FINANCIAL STRENGTH

Don't let underutilized fixed assets be a persistent drain on your resources.



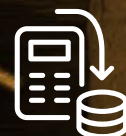
IMPROVED SAFETY

We're dedicated to providing the highest quality of MEP rental equipment in the area.



TECHNICAL TRAINING

You are not in this alone. We can help train your team on proper equipment use.



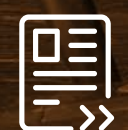
DRIVE DOWN OVERHEAD COSTS

We'll manage the equipment so your team can manage the job.



EXPAND YOUR SERVICES

Get the right piece of equipment to tackle any job thrown at you.



BUDGET CONTROL & JOB COSTS

Rental invoices provide clear documentation of tool usage & can be billed out to your jobs.

REPAIR CATEGORIES:

- HONDA GENERATORS
- HYDRAULICS
- MATERIAL LIFTS
- RIDGID DIAGNOSTIC CAMERAS
- THREADING & GROOVING EQUIPMENT
- BENDING & PULLING EQUIPMENT

- CABLE TERMINATION
- CORING & CUTTING EQUIPMENT
- CRIMPING EQUIPMENT
- DRAIN CLEANING EQUIPMENT
- GAS POWERED SAWS
- GAS SMALL ENGINES

ON STAFF SPECIALISTS

WE ARE HERE TO ASSIST YOU ON THE LATEST INDUSTRY CODES, STANDARDS & REQUIREMENTS.

Beyond their extensive product knowledge and clear understanding of today's standards and regulations, our category specialists provide added value as a single point of contact between you and the top manufacturers in the industry.

SAFETY SPECIALISTS

Providing life-saving resources to help you in the field

Our team utilizes a clear understanding of today's safety standards to provide solutions focused on minimizing risk throughout the entire organization. We work directly with your team to develop a comprehensive fall protection program that builds a culture of safety beyond standard compliance.



PRODUCT REVIEW
& SELECTION



CODE COMPLIANCE
& TRAINING



PROCESS & INSPECTION
DOCUMENTATION

Our team is here to help champion your efforts to minimize risk, reduce injuries and related costs, and implement an attitude of safety excellence beyond standard compliance.

SPECIFIED PRODUCTS

Custom, labor-saving solutions delivered directly to the jobsite

To maximize your profitability, our Specified Products Managers get involved in the early stages of a project and utilize their comprehensive understanding of installation and assembly requirements to provide value engineered products and solutions tailored to the specific needs of the project.



LIGHT ASSEMBLY,
FABRICATION & KITTING



VALUE
ENGINEERING



ON-SITE
CONSULTATION

Design assist, budget analysis and supply capabilities of primary and seismic supports for: plumbing and mechanical piping systems, Hydronics, HVAC Ducts, sprinkler systems, cable trays, data rooms, electrical conduits, & lighting raceways.

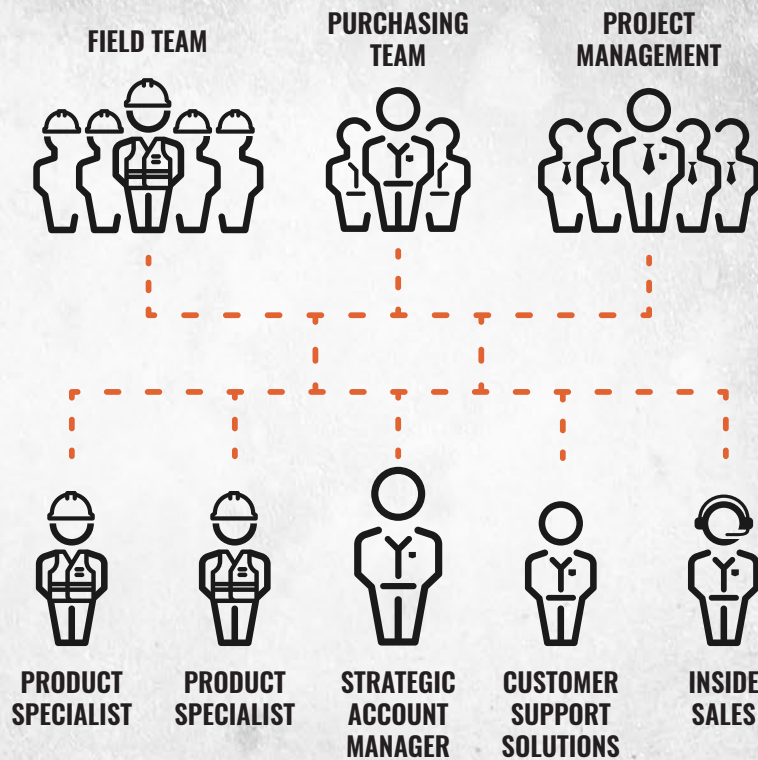
WE ARE IN THE JOBSITE PRODUCTIVITY BUSINESS.

*Anyone can sell you tools & equipment;
we offer unrivaled services that maximize
safety & efficiency on the jobsite.*

ACCOUNT MANAGEMENT

YOUR NEEDS HAVE CHANGED, SO WE DID TOO.

We've made the strategic decision to restructure our salesforce to elevate the individual needs of your entire team. Through the addition of resources, we designed a salesforce for multiple points of contact within your company. This gives us the ability to better understand your challenges across the organization and ensure that our resources are best aligned to support your team. This new structure promotes a free flow of direct communication with the individual who is best equipped to handle your needs through timely responses and technical knowledge.



KEEP YOUR CREWS DOING WHAT THEY DO BEST & LEAVE THE TIME-CONSUMING DETAILS UP TO US!

WHAT TO EXPECT FROM YOUR SALES SUPPORT TEAM:



STRATEGIC ACCOUNT MANAGER

- Acts as the main sales and support driver for all accounts within the region
- Implements and manages account specific buying programs
- Conducts quarterly business reviews within all accounts in the region

WORKS DIRECTLY WITH: Operations Manager, Director of Purchasing, Superintendents



INSIDE SALES

- Handles all questions or issues related to order entry, order status or inventory
- Monitors overall logistics & delivery requirements

WORKS DIRECTLY WITH: Purchasing Agents, Field Foreman



CUSTOMER SUPPORT SOLUTIONS

- Manages the weekly needs of the account by providing scheduled weekly calls
- Executes account specific service programs & requirements

WORKS DIRECTLY WITH: Purchasing Agents, Operations, Warehouse Team



SPECIALISTS

- Assists your team on the latest industry codes, standards and code requirements
- Acts as direct point of contact between you and top manufacturers in the industry

WORKS DIRECTLY WITH: Engineers, Project Managers, Safety Director, Site Foreman

JOBSITE PROGRAMS & SERVICES

With tighter project time lines and increasing labor rates, we are here to help you mobilize quickly with the products your team needs to get the job done. We work closely with the top contractors in the area to develop custom services and solutions that help tackle the challenges of today's modern jobsite.

VENDOR MANAGED INVENTORY (VMI)

Either at the shop or on the jobsite, our VMI programs are customizable to meet your needs. We work with your team to come up with a mix of products that help keep your team safe and working.

VMI PROCESS:

- Analyze purchasing history to develop a mix of products to stock
- Determine stocked quantities and overall service requirements
- Provide routine visits to the box to take inventory and restock products

JOB STARTUP RENTAL BOX:

Need to tool up quickly? We have the ability to create a custom rental package containing the tools, batteries and chargers you need to get the job done.

BENEFITS:

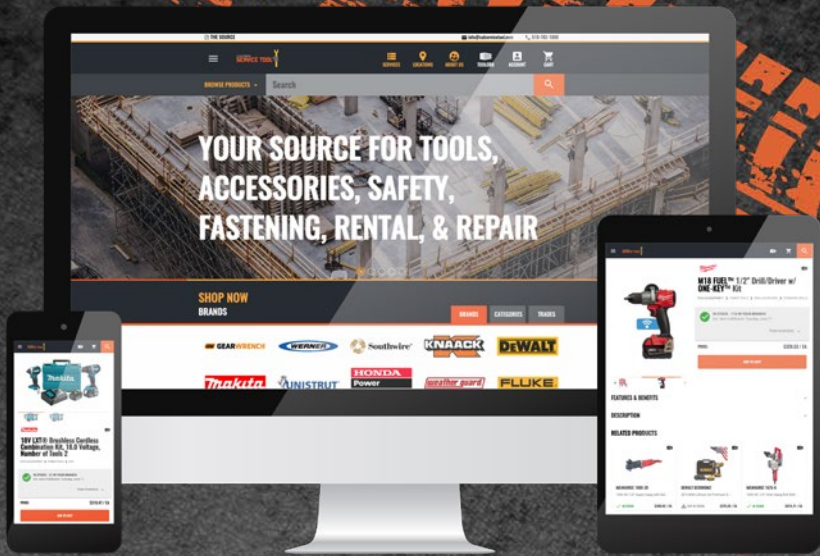
- Accurate Job Costs: Fixed monthly rental rate, zero repair costs throughout the job
- Quick Mobilization: Our boxes come fully stocked with the latest tools from the top brands
- Reduced Downtime: We handle all of the maintenance and repair throughout the job

GET US INVOLVED DURING THE EARLY STAGES OF YOUR NEXT PROJECT SO WE CAN PUT TOGETHER A CUSTOM SERVICE PACKAGE TO HANDLE ALL OF YOUR PURCHASING AND LOGISTICAL NEEDS!

WE HAVE WEB ORDERING!

START SHOPPING THE INDUSTRY'S BEST.

In the office or on the jobsite, we've given our customers the ability to view, purchase, and track their orders through our new web portal. Gain instant access to your data with our proprietary features designed to remove bottlenecks, standardize approved products, and review job spending. When paired together, these features help you do more with less and put money to the bottom line.



VISIT CALSERVICETOOL.COM TODAY TO SEE HOW OUR ONLINE PROPRIETARY FEATURES WILL HELP SAVE YOU TIME & MONEY!



Real Time Inventory & Pricing

Check inventory on all of the top items you purchase.



Track Order Status

All of the information your team needs is in one spot.



View Finance

View, download & print all of your outstanding invoices from one convenient place.



Place Orders

Orders flow directly into our system for quick turnaround.



Review Order History

Our comprehensive account dashboard allows you to check the status of all open orders.



Reorder Pad

Quickly review & reorder all of your recently purchased products.

OPEN AN ACCOUNT AND GET ACCESS TO OUR PROPRIETARY FEATURES!



Save your most commonly purchased items for fast and easy ordering. By job function, seniority, department or product type, categorize each TOOLCRB the way you want.



Tired of receiving handwritten material requisitions from the field? Speed up procurement times and improve order accuracy with our WEB ORDER REVIEW QUEUE.



If you don't know where you're going, any road will get you there. JOBALYTICS gives you the insights you need to make strategic cost management decisions.

THE ALCAL STORY

We Play a Vital Role in our Customers' Ability to Build Great Things.

It is our mission to be the industry leaders in delivering unmatched value and experience to our customers. We are driven by our dedication to exceptional customer-focus, communication and strength of character.

For over 50 years, we've had the privilege to contribute to our customer's ability to build great things while building iron-clad relationships in the process. As a family owned business, we pride ourselves on being receptive and responsive to our customers' needs. By removing the red tape and allowing direct access to key decision makers, we have the ability to make the timely decisions needed to keep your business running smoothly.



Two Companies. One Focus.

Alameda Electrical Distributors (AED) and California Service Tool (CST) are independent companies with the unique ability to work as a team and bring to market service packages and buying programs that go unmatched by any single competitor in our industry. When paired together, we provide the most comprehensive offering of superior electrical products, tools, tool rental and repair services, general safety, construction supplies and project management expertise.

As today's market place expands and becomes increasingly more competitive, maximizing your overall purchasing power and forming strategic business partners is now more important than ever before. The current landscape is forcing companies of all sizes to heighten their focus on how and where they allocate their resources and to possibly rethink the way they do business altogether.

As a partner, we look to combine our knowledge and value-added resources in a unique business-to-business collaboration. Our combined service offerings are designed to enhance mutual competitiveness in the market through greater efficiencies, cost reduction and increased profitability.



WE BUILT OUR BUSINESS

TO KEEP YOUR PEOPLE SAFE & WORKING



CHICO

629 Entler Avenue
Chico, CA 95928
530-781-1300

HAYWARD

3875 Bay Center Place
Hayward, CA 94545
510-782-1000

SAN JOSE

620 E. Trimble Road
San Jose, CA 95131
408-960-7390

DUBLIN

6500 Sierra Court
Dublin, CA 94568
925-361-9412

MODESTO

4719 Stoddard Road
Modesto, CA 95356
209-550-2500

SACRAMENTO

855 National Drive
Sacramento, CA 95834
916-925-3884

WWW.CALSERVICETOOL.COM